



## Cape to Cape with South Georgia & Tristan da Cunha onboard the *Silver Cloud* – 2024 Vessel Information

The *Silver Cloud* is the most spacious and comfortable ice class vessel in expedition cruising. With just 240 guests, the *Silver Cloud* has the highest space-to-guest and crew-to-guest ratios in expedition cruising. With her 20 Zodiacs, exploration possibilities are almost limitless. There is plenty of deck space for observing natural wonders and whenever possible the Captain will maneuver the ship to make the most of scenic cruising and wildlife sightings.

### Suite Categories

Suite Categories	Rates Per Person
Vista Suite	\$14,420
Veranda Suite	\$16,320
Deluxe Veranda Suite	\$18,620
Medallion Suite	\$23,720
Silver Suite	\$27,620
Royal Suite	\$32,220
Grand Suite	\$37,420
Owner's Suite	\$43,920
Solo – Vista	\$21,370
Solo – Veranda	\$24,220
Solo – Deluxe Veranda	\$27,670

### Vessel Specifications

Length.....	514.14 feet
Width.....	70.62 feet
Speed.....	18 knots
Tonnage.....	16,800
Ice-class Rating.....	1C
Guests.....	240
Crew.....	212
Refurbished.....	2017
Passenger Decks.....	7
Registry.....	Bahamas

### All Suites Include:

Twin beds or queen-sized bed with a choice of pillow types; refrigerator and bar stocked with your preferences; complimentary WiFi; plush bathrobe and slippers; luxury bath amenities; writing desk; walk-in wardrobe with personal safe; hair dryer; flat screen television with interactive media library; daily suite service, with nightly turndown.



# Expedition Details

## Cape to Cape

March 1–24, 2024

**24 Days** Trip Length

**240 Guests** Group Size onboard *Silver Cloud*

**Santiago / Cape Town** Start/End

## Included

The Apex rate includes, as noted in the itinerary, a welcome reception and dinner in Santiago with local beer and wine included; all transfers and all gratuities. In addition, the voyage rate includes, as described in the itinerary: roundtrip economy-class air from select cities to Santiago and from Cape Town; one pre-voyage overnight in Santiago; charter flight Santiago to Puerto Williams; accommodations onboard the *Silver Cloud*; activities and excursions as described in the itinerary; services of six Apex Expeditions leaders, as well as the full onboard Silversea lecture team and expedition staff; all crew gratuities; complimentary room service onboard the vessel; all meals and select wines and spirits onboard the vessel; permits; entrance fees; and taxes.

## Not Included

Costs not included in the price of your Apex expedition include travel to and from the start and end point of trip if you opt out of the Silversea economy-class air package; select premium brand drinks and liquor; travel protection (Trip Cancellation and Interruption, as well as Emergency Medical and Evacuation insurance, are highly recommended); airport departure taxes; equipment rental; excess baggage fees; passport and/or visa fees; items of a personal nature (phone calls, laundry, souvenirs, etc.); and independent travel arrangements pre- or post-trip.

## Payments & Terms

25% of the trip cost will confirm your place on the expedition. The final balance is due 150 days prior to departure. All prices are quoted in U.S. dollars and must be paid in U.S. dollars. Per person pricing is based on double occupancy. The solo rate is paid by participants who specifically request single accommodations and is subject to availability. If you are traveling alone and wish to share accommodations, we will try to match you with a roommate of the same gender. However, if a roommate is not available, the published solo rate will be charged. Upon confirming your reservation you will be required to pay the published Solo Rate, if we are able to pair you with a roommate, the applicable difference will be refunded at the time that the final trip payment is due for all participants. Please note that solo accommodations are limited and cannot always be guaranteed throughout. For our full set of Terms & Conditions, please visit our web site at [www.apex-expeditions.com/about/terms-conditions/](http://www.apex-expeditions.com/about/terms-conditions/)

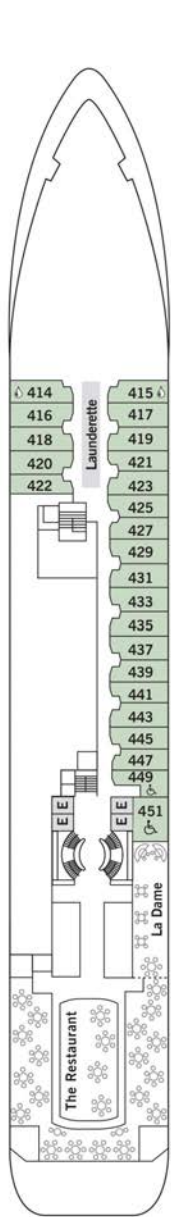
*One-of-a-kind adventures to the world's most fascinating places. Join us.*



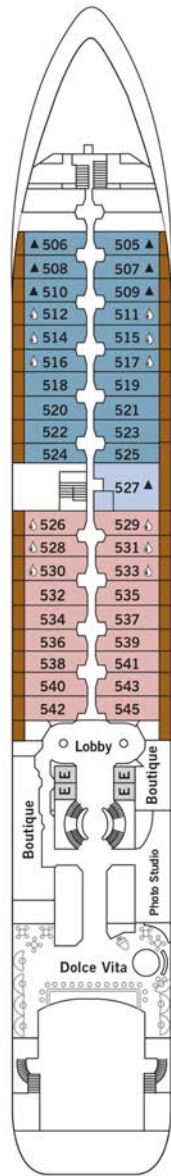
Tristan da Cunha © Richard Sibley



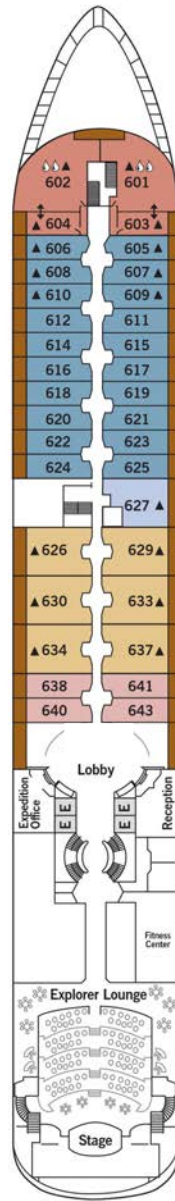
# Deck Plan - Silver Cloud



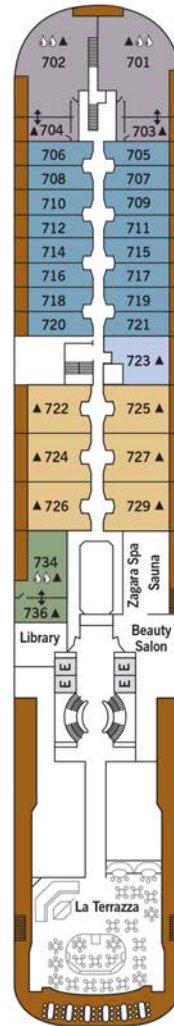
**DECK 4**  
The Restaurant  
La Dame  
Laundrette



**DECK 5**  
Dolce Vita Bar  
Boutique  
Photo Studio  
Lobby



**DECK 6**  
Explorer Lounge  
Fitness Center  
Reception  
Expedition Office  
Lobby



**DECK 7**  
La Terrazza  
Zagara Spa  
Library  
Beauty Salon



**DECK 8**  
Bridge  
Pool / Pool Bar  
The Grill  
Panorama Lounge

● Vista

● Veranda  
● Deluxe Veranda  
● Medallion

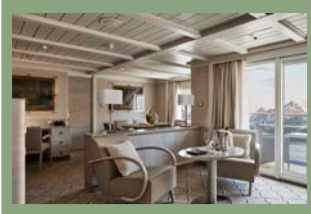
● Veranda  
● Deluxe Veranda  
● Medallion  
● Silver  
● Royal

● Veranda  
● Medallion  
● Silver  
● Grand  
● Owner's

♣ Bathtub/Shower Combo  
♣♣ Bathtub & Separate Shower  
▲ Third Guest Capacity  
↕ Connecting Suites



# Suite Details – *Silver Cloud*



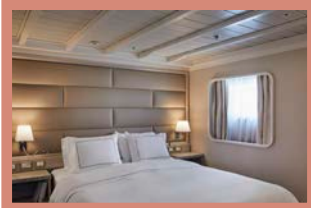
## **Owner's Suite**

587 sq. ft., including veranda (89 sq. ft.) • Large teak veranda with patio furniture and floor-to-ceiling glass doors • Living room with sitting area • Separate dining area • Marble bathroom, with full-sized bath and separate shower • Walk-in wardrobe with personal safe • Vanity table with hairdryer • Writing desk • Unlimited premium WiFi • Bose® Sound Touch 30 with Bluetooth connectivity • Illy® espresso maker



## **Grand Suite**

1,019 sq. ft., including veranda (145 sq. ft.) • Two teak verandas with patio furniture and floor-to-ceiling glass doors • Living room with sitting area • Separate dining area • Marble bathroom, with full-sized bath and separate shower • Walk-in wardrobe with personal safe • Vanity table with hairdryer • Writing desk • Unlimited premium WiFi • Bose® Sound Touch 30 with Bluetooth connectivity • Illy® espresso maker



## **Royal Suite**

736 sq. ft., including veranda (126 sq. ft.) • Large teak veranda with patio furniture and floor-to-ceiling glass doors • Living room with sitting area • Separate dining area • Marble bathroom, with full-sized bath and separate shower • Walk-in wardrobe with personal safe • Vanity table with hairdryer • Writing desk • Unlimited premium WiFi • Bose® Sound Touch 30 with Bluetooth connectivity • Illy® espresso maker



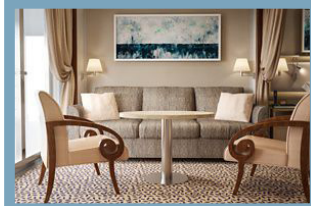
## **Silver Suite**

581 sq. ft., including veranda (92 sq. ft.) • Teak veranda with patio furniture and floor-to-ceiling glass doors • Living room with sitting area • Separate dining area • Two marble bathrooms with shower • Walk-in wardrobe with personal safe • Vanity table with hairdryer • Writing desk • Unlimited premium WiFi • Bose® Sound Touch 30 with Bluetooth connectivity



## **Medallion Suite**

517 sq. ft., including veranda (81 sq. ft.) • Teak veranda with patio furniture and floor-to-ceiling glass doors • Living room with sitting area • Separate dining area • Marble bathroom with shower • Walk-in wardrobe with personal safe • Vanity table with hairdryer • Writing desk • Unlimited premium WiFi • Bose® Sound Touch 30 with Bluetooth connectivity



## **Deluxe Veranda / Veranda Suite**

295 sq. ft., including veranda (49 sq. ft.) • Teak veranda with patio furniture and floor-to-ceiling glass doors • Sitting area • Marble bathroom with shower (some with bath/shower combination) • Walk-in wardrobe with personal safe • Hairdryer • Writing desk • Unlimited standard WiFi

*Deluxe Veranda Suite offers preferred central location with identical accommodations to Veranda*



## **Vista Suite**

240 sq. ft. • Large picture window providing panoramic ocean views • Sitting area • Marble bathroom with shower (some with bath/shower combination) • Walk-in wardrobe with personal safe • Hairdryer • Writing desk • Unlimited standard WiFi

