



Micronesia & Papua New Guinea onboard the *Silver Explorer* 2021 Vessel Information

The *Silver Explorer* has been designed specifically for navigating waters in some of the world's most remote destinations, including both polar regions. A strengthened hull with a Lloyd's +100A1+LMC Ice Class rating for passenger vessels allows her to safely push through ice floes with ease. There is plenty of deck space for observing the natural wonders and whenever possible the Captain will maneuver the ship to make the most of wildlife sightings.

Suite Categories

Suite Categories	Rates Per Person*
Adventurer Suite	\$14,480
Explorer Suite	\$15,080
View Suite	\$16,180
Vista Suite	\$17,280
Veranda Suite	\$23,880
Medallion Suite	\$28,280
Silver Suite	\$30,180
Grand Suite	\$33,280
Owner's Suite	\$36,780
Solo – Adventurer	\$22,280
Solo – Explorer	\$23,180
Solo – View	\$24,830
Solo – Vista	\$26,480

Vessel Specifications

Length.....	354 feet
Width.....	52 feet
Speed.....	14 knots
Tonnage.....	6,072
Ice-class Rating.....	1A
Guests.....	144
Crew.....	118
Refurbished.....	2017
Passenger Decks.....	5
Registry.....	Bahamas

* Above rates reflect a \$1,500 per person credit for the unused Silversea Economy Class Air Package.

All Suites Include:

Twin beds or queen-sized bed with a choice of pillow types; refrigerator and bar stocked with your preferences; Complimentary WiFi; Plush Etro® bathrobe; BVLGARI® bath amenities; iHome docking station; writing table; personal safe; hair dryer; flat screen television with interactive media library; daily suite service, with nightly turndown.



Expedition Details

Micronesia & Papua New Guinea onboard *Silver Explorer*

April 8 – 29, 2021

22 Days Trip Length

144 Guests Group Size onboard *Silver Explorer*

Guam / Cairns Start/End

Included

The Apex rate includes, as noted in the itinerary, one overnight and breakfast in Guam; one overnight in Cairns; touring in Cairns; farewell dinner in Cairns, with local beer and wine included; all gratuities and transfers. The Apex rate also includes a \$1,500 per person credit for unused Silversea Economy Class Air package. In addition, the voyage rate includes accommodations and meals aboard the *Silver Explorer*; activities and excursions as described in the itinerary; services of four Apex Expeditions leaders, as well as the full Silversea Expeditions onboard lecture team and expedition staff; all gratuities; complimentary room service onboard the vessel; select wines and premium spirits onboard the vessel; permits; entrance fees; and taxes.

Not Included

Costs not included in the price of your Apex expedition include travel to and from the start and end point of trip; select premium brand drinks and liquor; travel protection (Trip Cancellation and Interruption, as well as Emergency Medical and Evacuation insurance, are highly recommended); airport departure taxes; equipment rental; excess baggage fees; passport and/or visa fees; items of a personal nature (phone calls, laundry, souvenirs, etc.); and independent travel arrangements pre- or post-trip.

Payments & Terms

25% of the trip cost will confirm your place on the expedition. The final balance is due 150 days prior to departure. All prices are quoted in U.S. dollars and must be paid in U.S. dollars. Per person pricing is based on double occupancy. The solo rate is paid by participants who specifically request single accommodations and is subject to availability. If you are traveling alone and wish to share accommodations, we will try to match you with a roommate of the same gender. However, if a roommate is not available, the published solo rate will be charged. Upon confirming your reservation you will be required to pay the published Solo Rate, if we are able to pair you with a roommate, the applicable difference will be refunded at the time that the final trip payment is due for all participants. Please note that solo accommodations are limited and cannot always be guaranteed throughout. For our full set of Terms & Conditions, please visit our web site at www.apex-expeditions.com/about/terms-conditions/

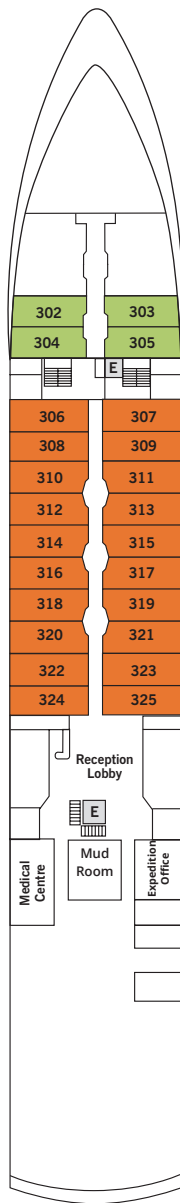
One-of-a-kind adventures to the world's most fascinating places. Join us.



White-tailed Tropicbird © Peter Harrison

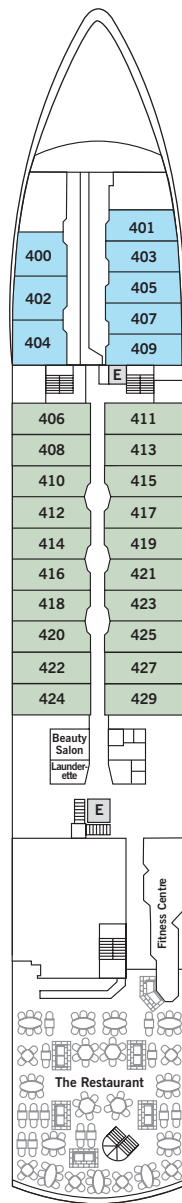


Deck Plan – Silver Explorer



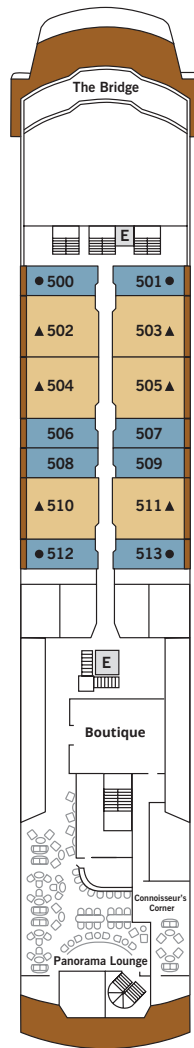
DECK 3
 Reception
 Medical Center
 Mud Room
 Expedition Office

- Adventurer Suite
- View Suite



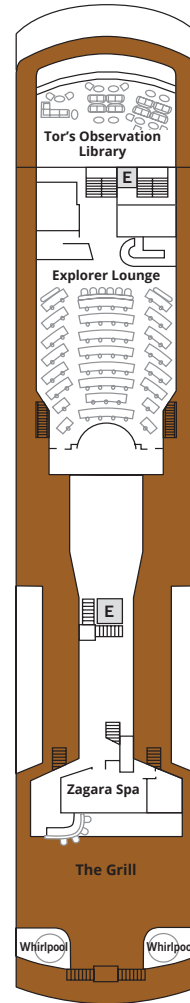
DECK 4
 Beauty Salon
 Laundrette
 Fitness Center
 The Restaurant

- Explorer Suite
- Vista Suite

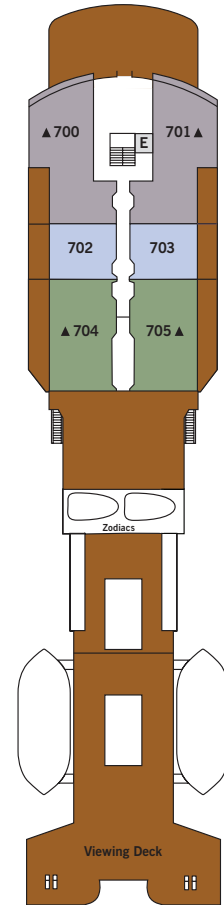


DECK 5
 The Bridge
 Boutique
 Connoisseur's Corner
 Panorama Lounge

- Veranda Suite
- Silver Suite



DECK 6
 Tor's Observation Library
 Explorer Lounge
 Zagara Spa
 The Grill
 Whirlpools



DECK 7
 Viewing Deck

- Medallion Suite
- Grand Suite
- Owner's Suite



Suite Details – *Silver Explorer*

Owner's Suite



728 sq. ft., including private balcony (158 sq. ft.) • Balcony with wooden parquet and patio furniture and floor-to-ceiling glass doors • Living room with sitting area • Marble bathroom, with full-sized bath and separate shower • Fitted wardrobe with personal safe • Vanity table with hairdryer • Writing desk • Illy® espresso maker • Unlimited premium WiFi • Two hours of worldwide phone use from your suite

Suite Layout



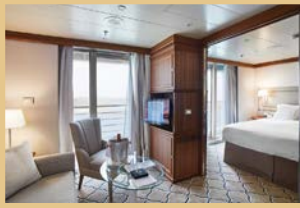
Grand Suite



618 sq. ft., including private balcony (86 sq. ft.) • Balcony with wooden parquet and patio furniture and floor-to-ceiling glass doors • Living room with sitting area • Marble bathroom, with full-sized bath and separate shower • Fitted wardrobe with personal safe • Vanity table with hairdryer • Writing desk • Illy® espresso maker • Unlimited premium WiFi • Two hours of worldwide phone use from your suite



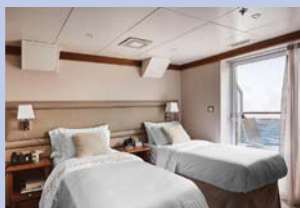
Silver Suite



422 sq. ft., including two French Balconies (30 sq. ft.) • Two French balconies with floor-to-ceiling glass doors • Living room • Marble bathroom, with full-sized bath and separate shower • Fitted wardrobe with personal safe • Vanity table • Sitting area with writing desk • Unlimited WiFi Internet access



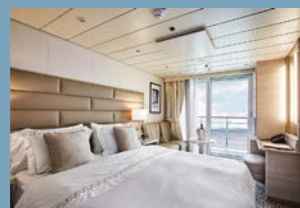
Medallion Suite



400 sq. ft., including private balcony (86 sq. ft.) • Balcony with wooden parquet and patio furniture and floor-to-ceiling glass doors • Marble bathroom, with full-sized bath and separate shower • Fitted wardrobe with personal safe • Sitting area with writing desk • Vanity table with hairdryer • Unlimited premium WiFi



Veranda Suite



206-216 sq. ft, including French Balcony (16 sq. ft.) • French balcony with floor-to-ceiling glass doors • Marble bathroom with shower • Fitted wardrobe with personal safe • Sitting area with writing desk • Unlimited standard WiFi



Vista Suite



192 sq. ft. • Large picture window providing panoramic ocean views (47 in. x 43 in.) • Marble bathroom with shower • Fitted wardrobe with personal safe • Sitting area with writing desk • Unlimited standard WiFi

Suite Layout



View Suite



192 sq. ft. • View window (31.5 in. x 31.5 in.) • Marble bathroom with shower • Fitted wardrobe with personal safe • Sitting area with writing desk • Unlimited standard WiFi



Explorer Suite



175-190 sq. ft. • View window (31.5 in. x 31.5 in.) • Marble bathroom with shower • Fitted wardrobe with personal safe • Sitting area with writing desk • Unlimited standard WiFi



Adventurer Suite



157-167 sq. ft. • Two portholes (15.75 in. diameter) • Marble bathroom with shower • Fitted wardrobe with personal safe • Sitting area with writing desk • Unlimited standard WiFi



Suite diagrams and deck plans are for illustration purposes only.

