



## Chile to Tahiti 2020 onboard the *Silver Explorer* – Vessel Information

The *Silver Explorer* has been designed specifically for navigating waters in some of the world’s most remote destinations. She’s the perfect platform for viewing these untamed landscapes, with all ocean-view suites and plenty of deck space. *Silver Explorer’s* shallow draft allows her to navigate closer to shore, and with a fleet of Zodiacs guests can land on isolated shores and explore varied ecosystems, up-close and in-depth.

### Suite Categories

Suite Categories	Rates Per Person
Adventurer Suite	\$15,270
Explorer Suite	\$15,870
View Suite	\$17,570
Vista Suite	\$18,170
Veranda Suite	\$22,270
Medallion Suite	\$30,470
Silver Suite	\$32,270
Grand Suite	\$36,270
Owner’s Suite	\$40,370
Solo – Adventurer	\$22,695
Solo – Explorer	\$23,595
Solo – View	\$26,145
Solo – Vista	\$27,045

### Vessel Specifications

Length .....	354 feet
Width.....	52 feet
Speed .....	14 knots
Tonnage.....	6,072
Ice-class Rating.....	1A
Guests.....	144
Crew .....	113
Refurbished .....	2017
Passenger Decks.....	5
Registry.....	Bahamas

### All Suites Include:

Twin or queen premium mattresses (except suites 512 & 513 which have a fixed queen bed) with a choice of pillow types; fine Pratesi bed linens and down duvets; refrigerator and bar stocked with your preferences; iPod docking station; writing table; personal safe; hair dryer; flat screen television with interactive video, on-demand movies and music, and satellite news programming; plush robes and slippers; daily suite service with nightly turndown, WiFi internet access.



# Expedition Details

## Chile to Tahiti March 17 – April 10, 2020

**25 Days** Trip Length

**Santiago / Pape'ete** Start / End

### Included

Included in the price of your Apex expedition are all accommodations as noted in the itinerary; meals, activities and excursions; all gratuities; complimentary room service onboard the vessel; select wines and premium spirits onboard the vessel; local beer and wine with dinner in Viña del Mar and Pape'ete, as noted in the itinerary; services of five Apex Expeditions leaders, as well as the full onboard lecture team and expedition staff; local guides; airport transfers; permits; entrance fees; and taxes.

### Not Included

Not included in the price of your Apex expedition are airfare to Santiago and home from Pape'ete; select premium wines and liquors; travel insurance (Trip Cancellation and Interruption, as well as Emergency Medical and Evacuation insurance are highly recommended); airport departure taxes; passport and/or visa fees; excess luggage charges; items of a personal nature (phone calls, laundry, souvenirs, etc.); onboard spa and salon services; and independent travel arrangements pre- or post-trip.

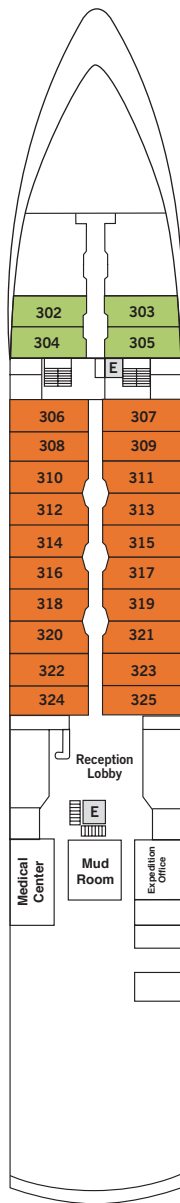
### Payments & Terms

25% of the trip cost will confirm your place on the expedition. The final balance is due 150 days prior to departure. All prices are quoted in U.S. dollars and must be paid in U.S. dollars. Per person pricing is based on double occupancy. The Solo Rate is paid by participants who specifically request single accommodations and is subject to availability. If you are traveling alone and wish to share accommodations, we will try to match you with a roommate of the same gender. However, if a roommate is not available, the published Solo Rate will be charged. Upon confirming your reservation you will be required to pay the published Solo Rate, if we are able to pair you with a roommate, the applicable difference will be refunded at the time that final trip payment is due for all participants. Please note that solo accommodations are limited and cannot always be guaranteed throughout. For our full set of Terms & Conditions, please visit our web site at [www.apex-expeditions.com/about/terms-conditions/](http://www.apex-expeditions.com/about/terms-conditions/)

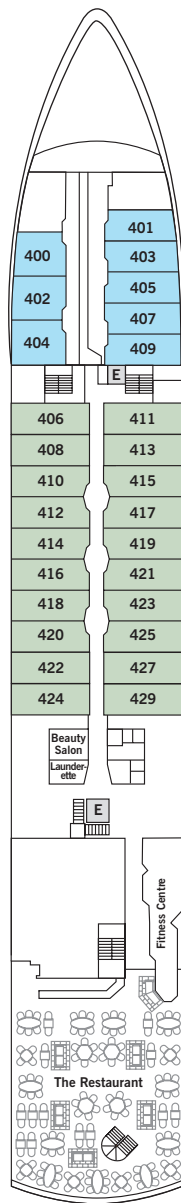
*One-of-a-kind adventures to  
the world's most fascinating  
places. Join us.*



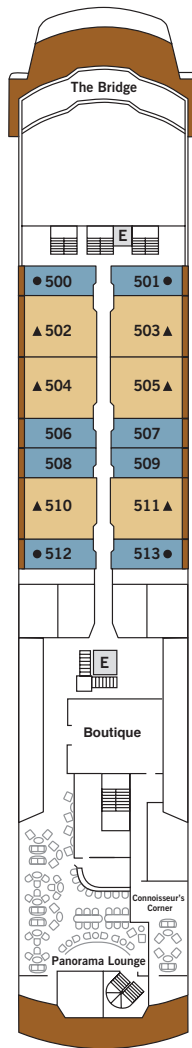
# Deck Plan - Silver Explorer



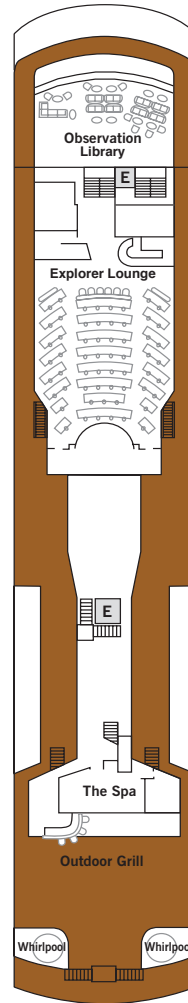
**DECK 3**  
 Reception  
 Medical Center  
 Mud Room  
 Expedition Office



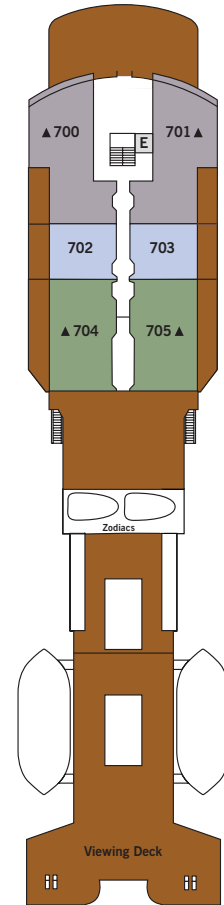
**DECK 4**  
 Beauty Salon  
 Laundry  
 Fitness Centre  
 The Restaurant



**DECK 5**  
 The Bridge  
 Boutique  
 Connoisseur's Corner  
 Panorama Lounge



**DECK 6**  
 Observation Library  
 Explorer Lounge  
 The Spa  
 Outdoor Grill



**DECK 7**  
 Viewing Deck

- Adventurer Suite
- View Suite

- Explorer Suite
- Vista Suite

- Veranda Suite
- Silver Suite

- Medallion Suite
- Grand Suite
- Owner's Suite



# Suite Details - *Silver Explorer*

## Owner's Suite



728 sq. ft., including private balcony (158 sq. ft.) • Balcony with wooden parquet and patio furniture and floor-to-ceiling glass doors • Living room with sitting area • Marble bathroom, with full-sized bath and separate shower • Fitted wardrobe with personal safe • Vanity table • Writing desk • Illy® espresso maker • Unlimited WiFi Internet access • Two hours of worldwide phone use from your suite

## Suite Layout



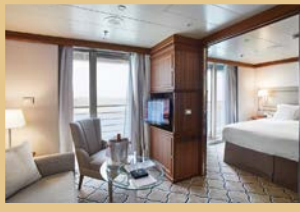
## Grand Suite



618 sq. ft., including private balcony (86 sq. ft.) • Balcony with wooden parquet and patio furniture and floor-to-ceiling glass doors • Living room with sitting area • Marble bathroom, with full-sized bath and separate shower • Fitted wardrobe with personal safe • Vanity table • Writing desk • Illy® espresso maker • Unlimited WiFi Internet access • Two hours of worldwide phone use from your suite



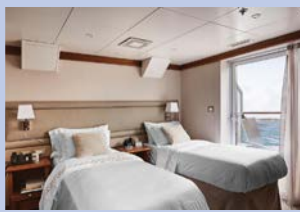
## Silver Suite



422 sq. ft., including two French Balconies (30 sq. ft.) • Two French balconies with floor-to-ceiling glass doors • Living room • Marble bathroom, with full-sized bath and separate shower • Fitted wardrobe with personal safe • Vanity table • Sitting area with writing desk • Unlimited WiFi Internet access



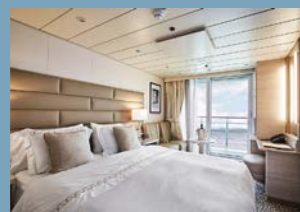
## Medallion Suite



400 sq. ft., including private balcony (86 sq. ft.) • Balcony with wooden parquet and patio furniture and floor-to-ceiling glass doors • Marble bathroom, with full-sized bath and separate shower • Fitted wardrobe with personal safe • Sitting area with writing desk • Vanity table • Unlimited WiFi Internet access



## Veranda Suite



206-216 sq. ft, including French Balcony (16 sq. ft.) • French balcony with floor-to-ceiling glass doors • Marble bathroom with shower • Fitted wardrobe with personal safe • Sitting area with writing desk • Unlimited WiFi Internet access



### Vista Suite



192 sq. ft. • Large picture window providing panoramic ocean views ( 47 in. x 43 in.) • Marble bathroom with shower • Fitted wardrobe with personal safe • Sitting area with writing desk • Unlimited WiFi Internet access

### Suite Layout



### View Suite



192 sq. ft. • View window (31.5 in. x 31.5 in.) • Marble bathroom with shower • Fitted wardrobe with personal safe • Sitting area with writing desk • Unlimited WiFi Internet access



### Explorer Suite



175-190 sq. ft. • View window (31.5 in. x 31.5 in.) • Marble bathroom with shower • Fitted wardrobe with personal safe • Sitting area with writing desk • Unlimited WiFi Internet access



### Adventurer Suite



157-167 sq. ft. • Two portholes (15.75 in. diameter) • Marble bathroom with shower • Fitted wardrobe with personal safe • Sitting area with writing desk • Unlimited WiFi Internet access



*Suite diagrams and deck plans are for illustration purposes only.*

